



# Vigilant Rotating Wine Racks

## Installation Instructions

*Superior Design & Craftsmanship*



## Rotating Wine Rack

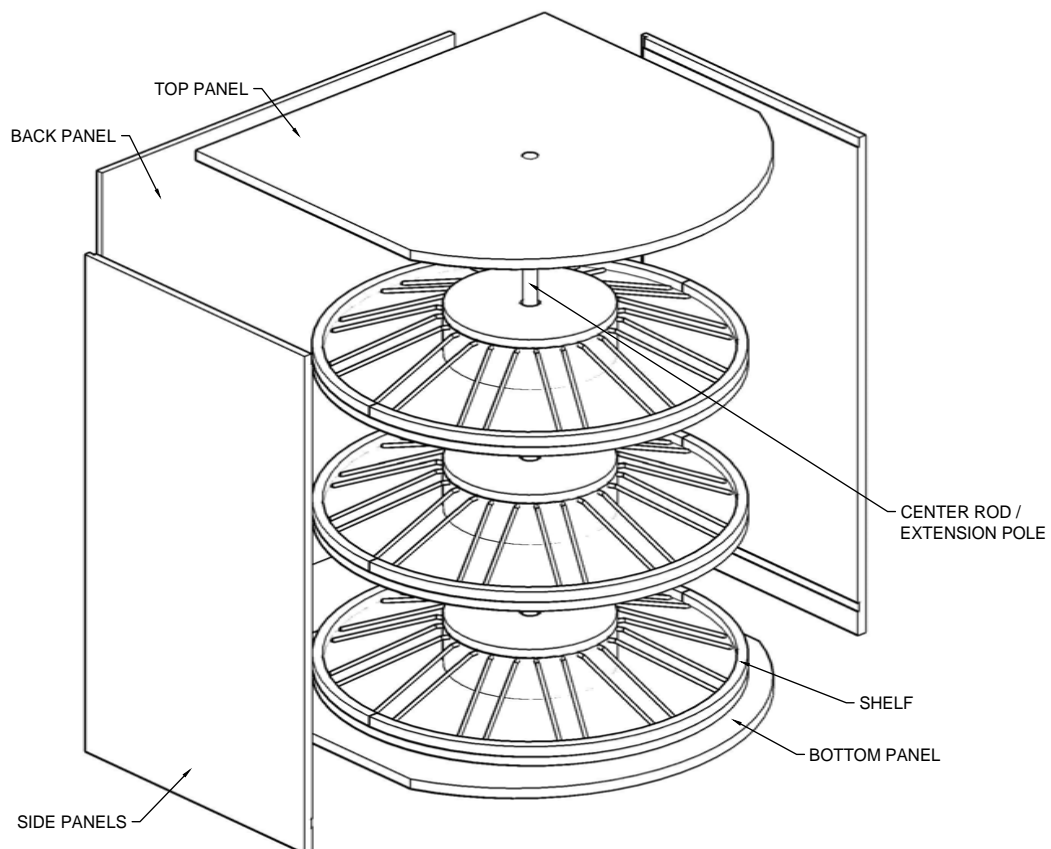
## Parts List:

- Top panel
- Back Panel
- 2 side panels
- Center rod with extension pole
- 3 Shelves (dependent upon order)
- 2 collars (dependent upon order)
- 2 mounting flanges with jack screws

## Tools & Materials Needed:

- Drill and drill bits
- Tape measure
- #8 wood screws
- Fabrication spreader
- Clamp

## Exploded View:



# Assembly

1. Locate the top, bottom and side panels (See parts list).
2. Locate the mounting flange hardware and supplied screws and attach to the top and bottom panels. Make sure when attaching the mounting flanges that the set screws are facing the forward edge of each panel. (See figures 1 & 2)

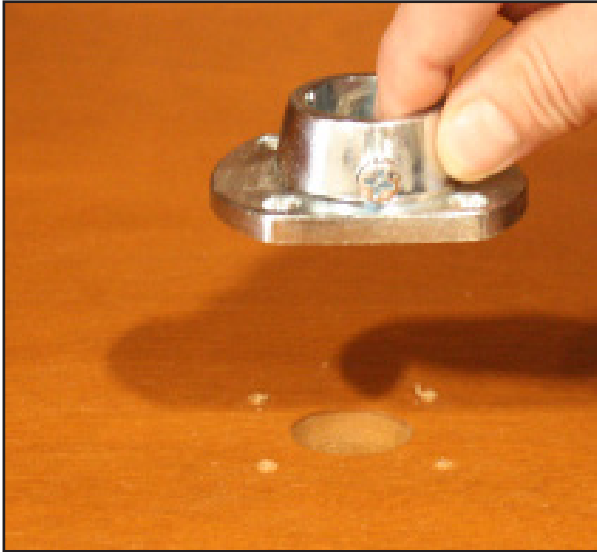


Figure 1



Figure 2

3. With bottom and side panels stood vertically on their back edge affix the bottom panel to both side panels using the pre-drilled holes and screws provided.
4. Locate the jack screw (in a base cabinet application only) and thread it through the bottom panel into the lower mounting flange. The jack screw will be adjusted to contact the floor once the unit has been properly installed in place and affixed to the wall. (See figure 3)



Figure 3

5. Temporarily affix a fabrication spreader, this piece along with a clamp will keep the side panels from spreading when the unit is stood up.

6. Stand the unit up on its feet or bottom panel. (See figure 4)

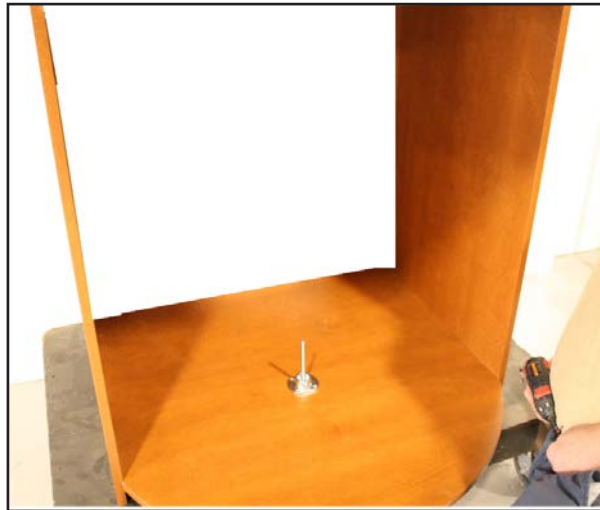


Figure 4

7. Locate the shelves, center support rod, shelf stop collars, and center extension rod.



Shelf



Collar & Set Screw



Extension Rod



Center Support Rod

8. Remove all set screws and place in a safe location.

9. Place the center support rod into lower flange. With the set screw hole at the top of the rod facing forward tighten the base set screw in the lower mounting flange until rod is secured. (See figures 5 & 6)



Figure 5



Figure 6

10. Place first shelf directly onto lower mounting flange. (See figure 7)



Figure 7

11. Locate a shelf stop collar and slide it onto the center support rod. (See figure 8)



Figure 8

12. Repeat steps 10-11 until all shelves are installed. (See figure 9)



Figure 9

13. Locate the top set screw that goes into the center support rod and the extension rod and slide the extension rod into top of center support rod. (See figure 10)

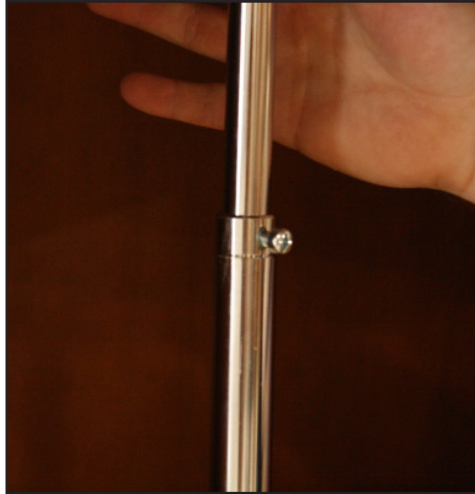


Figure 10

14. Attach the top panel, with top mounting flange (pre-attached), and affix to both side panels using the pre-drilled holes and screws provided. (See figure 11)

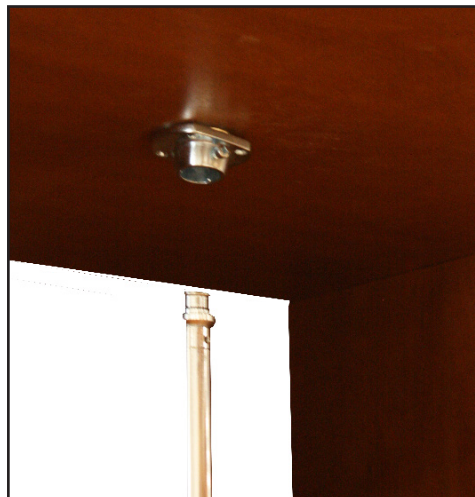


Figure 11

16. Locate the back panel and affix to back edge of top panel so the back panel top edge is flush with top of the assembled unit. (See figure 12)

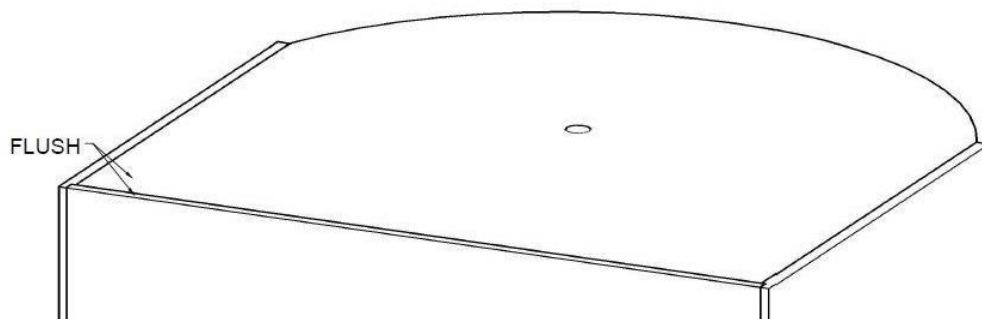


Figure 12

17. Before affixing the back panel to the bottom panel back edge ensure that the carcass assembly is square by taking diagonal measurements. Once both measurements are equal, and unit is stabilized, affix the bottom edge of the back panel to the back edge of the bottom panel. (See figure 13)

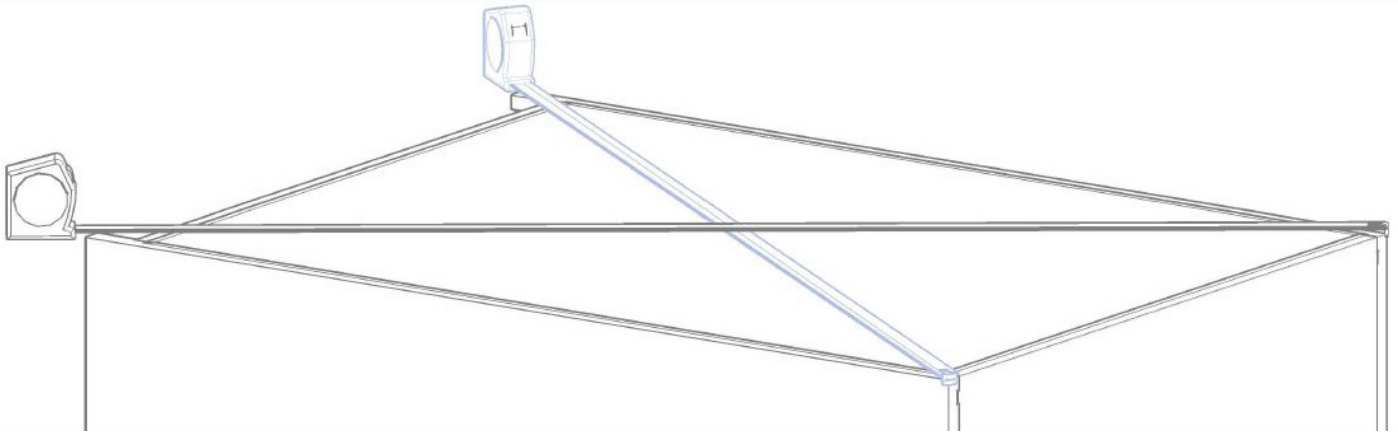


Figure 13

18. Using a clamp or extra helper, press the cabinet side panels tight to the back panel and affix with a wire brad or staple. Be careful to not fasten through the side panel.

19. Once the carcass of the cabinet is assembled you can adjust the shelves the way you would like. We recommend moving the top shelf as close to the top as possible by loosening the collar and tightening at the desired location. Then split the difference between the remaining shelves using a tape measure and adjust the collar accordingly. (See figure 14)



Figure 14

20. Congratulations your Vigilant Rotating Wine Rack is now assembled!



***Vigilant Inc.***

85 Industrial Park Drive Dover, NH 03820

Toll Free: 888-812-4427

Phone 603-285-0400 | Fax 603-285-0420

Vigilantinc.com

Copyright © 2018 by Vigilant Inc. All rights reserved.